

# Fort Barfoot Natural Resources

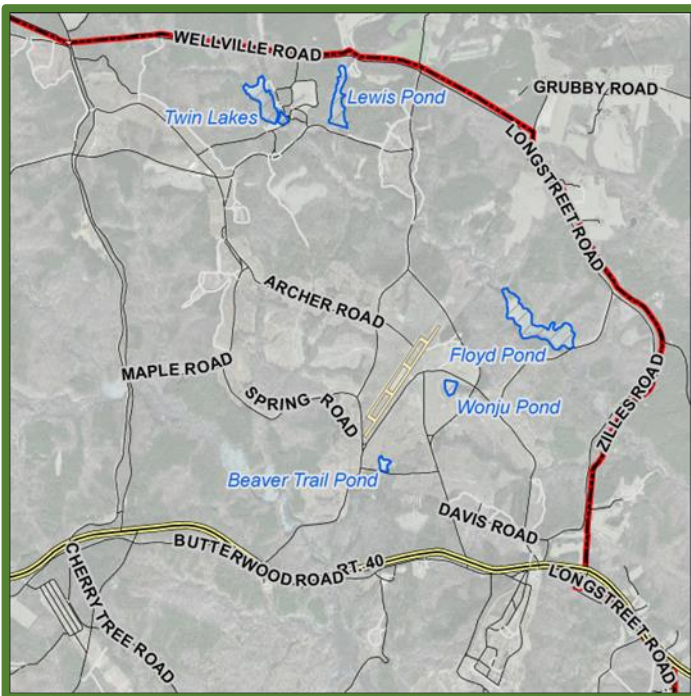
## Twin Lakes

**Latitude: 37.11074032    Longitude: -77.89639544**

Twin Lakes, the main pond, is a 16-acre impoundment located in area 14 of Ft. Barfoot.

This impoundment is easily accessible and supports a multi-species fishery with potential for solid catch rates of sunfish, largemouth bass, channel catfish and black crappie. Creel limits are liberal for sunfish and black crappie; however, a 1 fish per day 22in. minimum length limit is in effect for all largemouth bass. The average water depth is 5ft. with the deepest potential being 8.5-9ft. Twin Lakes provides some bank fishing access but is best enjoyed with a personal watercraft. Twin Lakes is perfect if you are looking for a good all-around fishery that provides species variety with the occasional potential for trophy class fish.

Twin Lakes Small Pond is a 2-acre impoundment located in area 14 immediately below the dam of Twin Lakes Main Pond. The fishing potential in Twin Lakes Small Pond is identical to the Main Pond and is stocked periodically with channel catfish to support special fishing events and youth outreach programs. Twin Lakes Small Pond is frequently closed for management purposes.



### ADDRESS

Fort Barfoot Game Check Station  
Dearing Ave  
Blackstone, VA  
23824

### PHONE

Ft Barfoot Game Check Station:  
434-292-2618  
Ft. Barfoot Natural Resources Office:  
434-292-2292

### WEBSITE

<https://barfoot.isportsman.net>